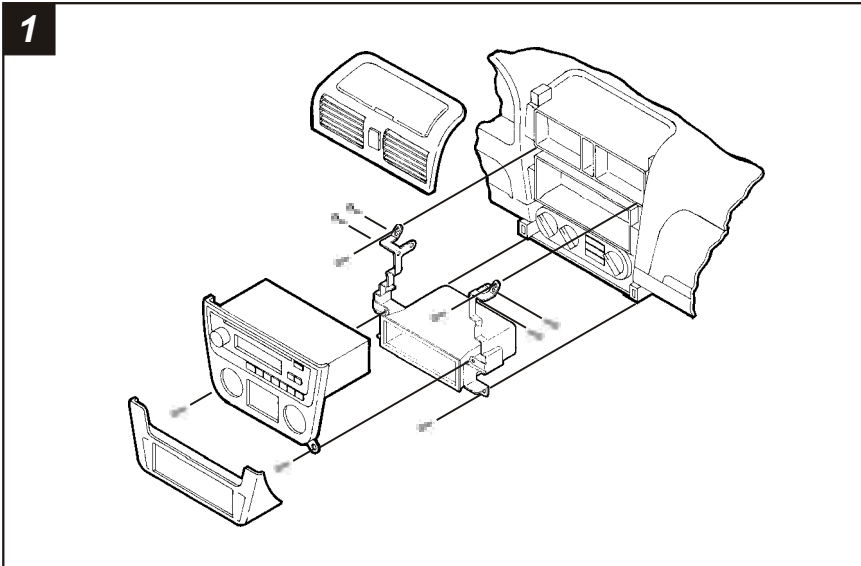
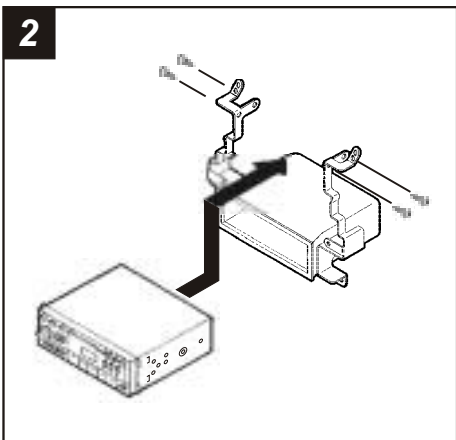


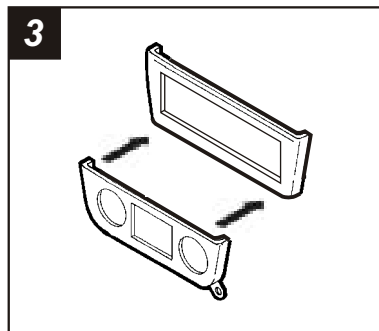
ALL VEHICLES



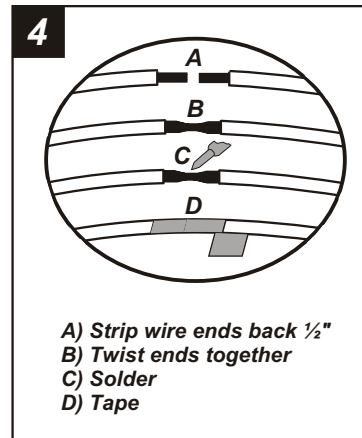
Disconnect the negative battery terminal to prevent an accidental short circuit. Open the storage compartment, pull out on the lip of the compartment opening and remove the storage compartment/trim bezel assembly. Grasp the back of the pocket trim bezel, pull out on the bezel and remove. Remove (4) screws securing the sub-dash bracket assembly and remove the assembly. Remove (2) screws securing the bottom of the climate control trim bezel and (4) screws securing the head unit to the sub-dash bracket assembly. Unsnap the climate control trim bezel from the head unit and head unit trim bezel.



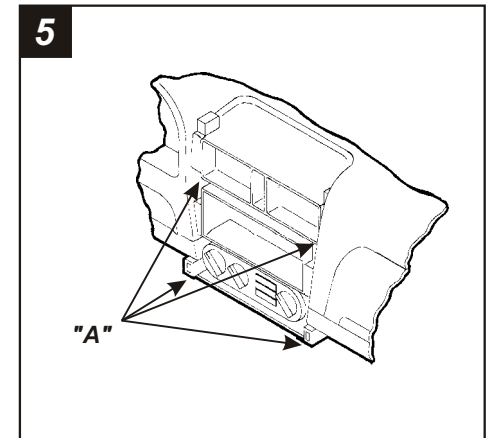
Slide the aftermarket head unit into the sub-dash bracket assembly and mount the head unit with (4) screws supplied with the head unit.



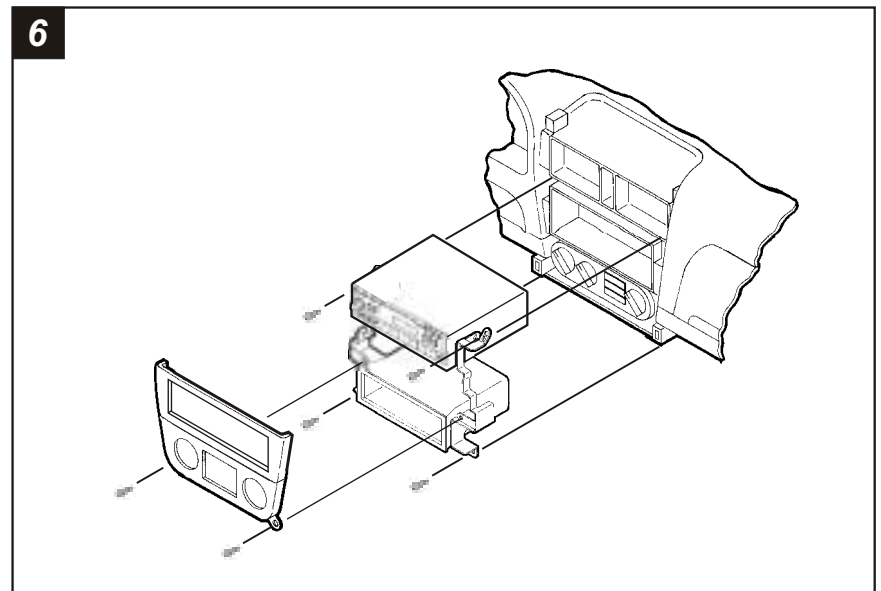
Snap the tabs on the top of the climate control trim bezel into the slots on the bottom of the **Radio Housing**.



Locate the factory wiring harness in the dash. Metra recommends using the proper mating adaptor and making connections as shown. (Isolate and individually tape off the ends of any unused wires to prevent electrical short circuit).



Locate the (4) mounting positions for the sub-dash bracket assembly ("**A**").



Mount the sub-dash bracket assembly to the sub-dash with (4) screws previously removed in step #1. Mount the Radio Housing/climate control trim bezel assembly over the mounted sub-dash bracket assembly with (2) screws previously removed in step #1.

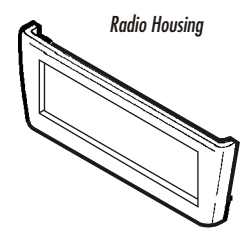
KIT FEATURES

- ▶ ISO-DIN head unit provisions
- ▶ Factory pocket retention

99-7414

INSTALLATION INSTRUCTIONS

KIT COMPONENTS



APPLICATIONS

<u>CAR</u>	<u>PAGE</u>
NISSAN	
Sentra 2000-02.....	1-2



TOOLS REQUIRED

